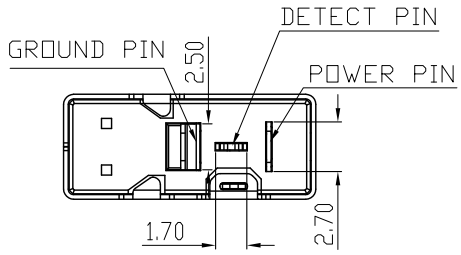
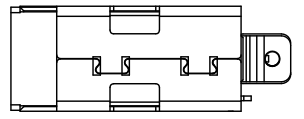
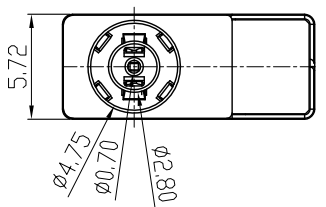
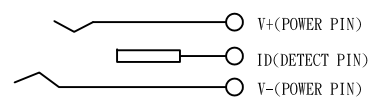
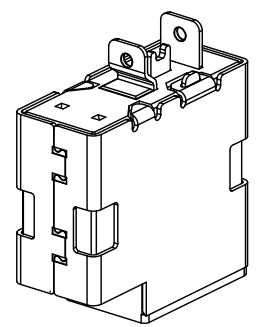
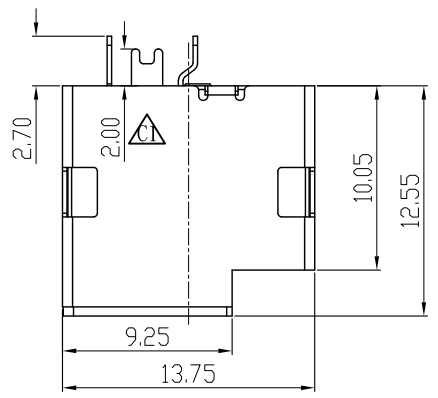


REV	DESCRIPTION	ECN/ECR	DATE	DRAWN BY
△1	設計變更, 修改膠體結構	ECR	08/23/2013	陳 昊
△2	工程變更, 修改電鍍規格	ECN	03/06/2014	陳 昊
△3	修改電鍍規格	ECR	05/05/2015	鐘 杭
△4	工程變更, 加標0尺寸并增加TABLE表	ECN	08/09/2018	左勝勝
△5	刪除TAB表	ECR	12/08/2018	左勝勝



SPECIFICATION:

- ELECTRICAL CHARACTERISTICS:
 - CONNECTOR RATED CURRENT: 7.0A & 30° MAX ΔT OVER AMBIENT RATED VOLTAGE: 19V DC
 - INSULATION RESISTANCE 50MΩ MIN AT 500V DC AFTER 1 MINUTE
 - DIELECTRIC WITHSTANDING VOLTAGE: 500V AC FOR 1 MINUTE,
 - CONTACT RESISTANCE: 30 mΩ MAX.
- MECHANICAL CHARACTERISTICS:
 - INSERTION FORCE: 5.0-25.0 N MAX
EXTRACTION FORCE: 3.5-20.0 N (INTIAL), 4.0-20.0 N (AFTER LIFE TEST)
 - DURABILITY (INSERTION/EXTRACTION CYCLES) > 5000 CYCLES
- P.C.B LAYOUT DRAWING DIMENSION: DEFAULT TOLERANCE: ±0.05mm
- REMARK: MOISTURE SENSITIVE DEVICE MSL6-AFTER PACKAGING HAS BEEN OPENED 8 HOURS, PARTS MUST BE BAKED FOR MIN 5 DAYS AT 40°C & 5% RH
- LED'S CHARACTERISTICS

Build of material:

NO	DESCRIPTION	QTY	MATERIAL	FINISH (OR COLOR)	SUPPLIER
6	SLIM HP DC JACK (Thin 5.72mm) - STOPPER	1	LCP	BLACK	HuaGang (Sumi tomo E6808/E6906) CungShi ji (TORAY LX70745B) ChangTai (SAMSUNG KC184BLM/KD135BS)
5	SLIM HP DC JACK (Thin 5.72mm) - DETECT PIN	1	PHOSPHOR BRONZE T=0.35±0.05mm	50u"Ni min, Pd/Ni 30u"min with 5u" Au Plating at contact area	△3
4	SLIM HP DC JACK (Thin 5.72mm) - POWER PIN	1	PHOSPHOR BRONZE T=0.25±0.05mm	50u"Ni min, Pd/Ni 30u"min with 5u" Au Plating at contact area	△3
3	SLIM HP DC JACK (Thin 5.72mm) - GROUND PIN	1	PHOSPHOR BRONZE T=0.25±0.05mm	50u"Ni min, Pd/Ni 30u"min with 5u" Au Plating at contact area	△3
2	SLIM HP DC JACK (Thin 5.72mm) - HOUSING	1	LCP	BLACK	HuaGang (Sumi tomo E6808/E6906) CungShi ji (TORAY LX70745B) ChangTai (SAMSUNG KC184BLM/KD135BS)
1	SLIM HP DC JACK (Thin 5.72mm) - SHELL	1	SUS	50u" - 100u" NI	CanVu (SUS 201) QiShun (SUS 201)

東莞世華電子有限公司
 SHYH HWA ELECTRONICS CO., LTD. (DONGGUAN)
 地址: 東莞市塘廈鎮諸佛嶺178工業區
 TEL: 0769-7910020-1 FAX: 0769-7910210

DRAWN BY 左勝勝
 CHECKED BY
 APPROVED BY

ITEM SLIM HP DC JACK 焊線式
 (Thin 5.72mm) 無LED (451 專用)
 PART NO CD2431022002 TOLERANCE

ANGLE PROJECTION UNIT mm
 SCALE 1:1
 DATE 12/08/2018
 .X±0.30
 .XX±0.20